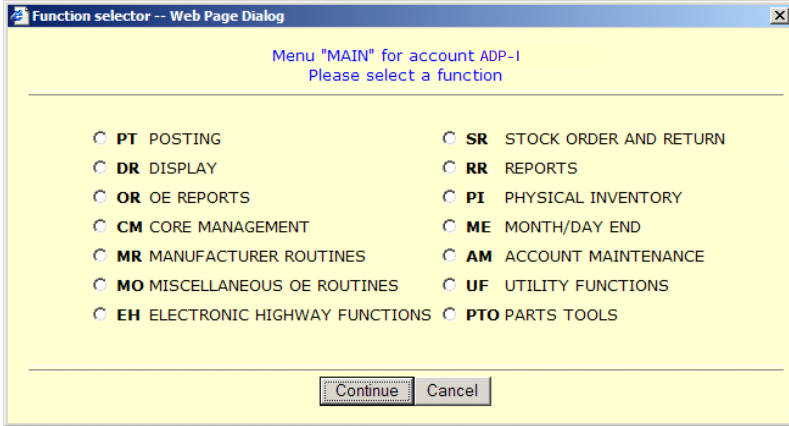




# Parts Menu

## Quick Reference Card

### Parts Functions (-I Account)



#### PT Posting

- AO Automated Purchase Order
- CPO Create/Modify Purchase Order
- DPO Display Purchase Order
- MPH Maintain PO History
- RPO Print Reports
- MCP Manually Close Purchase Order
- SMA Set Up and Maintain APO
- CA Parts Invoicing Cashiering
- DS Display, Sell & Locate Parts
- OE Order Entry
  - I Create/Modify Parts Invoice
  - RRS Review Receipted Special Order
  - SOR Create/Modify Special Order Re
  - SPI Special Order Request Inquiry
  - DBD Display Body Shop Estimate
  - DH Display Hold Statuses
  - PRO Parts Charges for Repair Order
  - ROA Add Parts to Repair Order
  - SSPS Start Service Pricing System
- PM Part Maintenance
- PN Part Number Change
- PO Post Orders
- PR Post Receipts
- PS Post Sales
- PSN Part Scan Receiving
- RA Adjust and Receipt

#### SR Stockorder and Return

- STK Stockorder
- MSR Multiple Stock Returns
- SST Send Stockorder
- DSS DCS Send Stockorder
- RST Report Stockorder
- RMR Report MO Review
- SCS Source Change by Year Sales

#### DR Display

- DL Display Only
- DP Display History and Posting

#### RR Reports

- DPL Detail Parts List
- RDPL Report Parts Detail
- ENG Enter English Statement
- LOP Locator Pad
- MGR Management Reports
- RAD Apprec Deprec
- RBB By Bin
- RCM Comments
- RCO Customer Orders
- RES Excess Stock
- REV Excess Value
- RLF LIFO
- RLE Lost & Emergency
- RMR Report MO Review
- RNO Negative Onhand
- RNP New Parts
- RNB No Bin
- RNC No Cost
- RNM No Movement
- RNU No Update
- RCT Report Not Counted
- ROC Cancelled Orders
- ROD Order Detail
- ROR Orders
- RPC Part Change
- RPM Report Plus and Minus
- RRE Review
- RRH Receipt History
- RSA Sales
- RSP SP Status Parts
- RSS Special Status
- RST Report Stockorder
- RSO Stockouts
- RTH Transaction History
- RTR Transaction
- IERP Employee Productivity Report

#### OR

- DIR Daily Invoice Report
- ISM Invoice Summary
- RBE Report by Employee
- RCR Report Customers
- RGD Report Tax Grp Definitions
- RIC Report Invoice Corrections
- ROO Report Open Orders
- ROV Report Overrides
- RPD Report Prepaid
- RPE Report PID Errors
- RPH Report Sales & Profit History
- RQU Report Quotes
- RTA Report Tax Agency
- RTE Report Tax Exemptions
- RTS Report Tax Structure
- RXP Report Exceptions
- SRM Special Order Report Menu
- RGPS Gross Profit by Source
- RGPC Gross Profit by Customer
- RPRS Report Parts Required for Serv

#### OE Reports

- DIR Daily Invoice Report
- ISM Invoice Summary
- RBE Report by Employee
- RCR Report Customers
- RGD Report Tax Grp Definitions
- RIC Report Invoice Corrections
- ROO Report Open Orders
- ROV Report Overrides
- RPD Report Prepaid
- RPE Report PID Errors
- RPH Report Sales & Profit History
- RQU Report Quotes
- RTA Report Tax Agency
- RTE Report Tax Exemptions
- RTS Report Tax Structure
- RXP Report Exceptions
- SRM Special Order Report Menu
- RGPS Gross Profit by Source
- RGPC Gross Profit by Customer
- RPRS Report Parts Required for Serv

#### PI

- PIC Physical Inventory Checklists
- INS Print Inventory Sheets
- PHP Physical Preparation
- PBP Post by Page
- RCT Report Not Counted
- RMP Report Multiple Postings
- RPM Report Plus and Minus
- DPG Display Page
- RPP Reprint Page
- VPI Verify Physical Inventory
- PHR Physical Inventory Reports
- PSI Partscan Inventory Menu

#### Physical Inventory

#### CM

- CINQ Core Inquiry
- CMNT Core Maintenance
- CMOD Core Modification
- CRPT Core Reports
  - RCDC Core Deduction Codes
  - RCCO Customer Cores Owed
  - RCCR Customer Cores Returned
  - RCCS Customer Cores Sold
  - RCGP Core Group
  - RCSE Cores Sold by Employee
  - RDCI Dirty Core Inventory
  - RSVR Suggested Vendor Return
  - RVCD Vendor Credits
  - RVCS Vendor Credits Short
  - RVCH Vendor Core History
  - RVCO Vendor Cores Owed
- VCRD Vendor Credits
- VMNT Vendor Maintenance
- VNDR Vendor Report
- VRTN Vendor Returns

#### Core Management



# Parts Functions (cont.)

## ME Month/Day End

DND Day End  
 LOG MNE and MGR Progress Logs  
 MGR Management Reports  
 MNE Month End Close

## MR Manufacturer Routines

BMW BMW Manufacturer Menu  
 CHR DaimlerChrysler Menu  
 DCS Run DCS Routines  
 DSS DCS Send Stockorder  
 EXE Excess Stock Calculation  
 FMM Ford Manufacturer Menu  
 STR Stockorder Transmission Setup  
 FLM Freightliner Manufacturer Menu  
 GMM GM Manufacturer Menu  
 SST Send Stockorder  
 JMM Jaguar Manufacturer Menu  
 CMP Manufacturer's Comp Menu  
 CAS Case Manufacturer Menu  
 NVM Navistar Menu  
 NMC Nissan Menu  
 SBW BMW Setup Routine  
 HMA Hyundai Manufacturer Menu  
 DTM Data Transfer Menu  
 CAT Caterpillar Core Repricing  
 VWA VWA/Audi Manufacturer Menu  
 SMM Saab Manufacturer Menu  
 MSTK Manufacturer Stockorder  
 RPFRR RO Point of Sale Fill Rate  
 MBM Mercedes-Benz Menu  
 TMM Toyota Manufacturer Menu  
 IMA Ford Inventory Management Allowance  
 PATL Parts Activity DTR Logs  
 SHP Manufacturer Parts Shipper

## EH Electronic Highway Functions

DNC Electronic Highway Nightly Pro  
 DNL ADP National Parts Locator Setup  
 DNS ADP Master Parts Update Setup

## PTO Parts Tools

CLP Check Looping PNCS  
 CMC Check MNE Conflicts  
 DPC Display Price Calculation  
 DSOA Display Source Accounting  
 RRP Reprint Reports  
 SDL Set Up Dealer Parts Lists

## AM Account Maintenance

AST Add Sort  
 DES Delete Sources  
 FLR File Retention Menu  
 EFR SOR Error File Retention  
 IFR Invoice File Retention  
 PCPD Purge Completed Parts Data  
 QFR Quote File Retention  
 SFR Special Order File Retention  
 RQR RO Quote File Retention  
 FRM Forms Builder  
 MNT Maintenance Menu  
 MSSC Display Source Controls  
 MSDS Set Up Days Supply Criteria  
 MSAP Set Up Phase-In/Out Criteria  
 MSMO Set Up Misc. Ordering Criteria  
 MSSO Set Up Sources  
 MSOP Set Up Order Pads  
 MSDA Set Up Dealer Accounts  
 MSSE Set Up Season Criteria  
 MSDL Set Up Display Lines  
 MSNP Set Up New Part Prompts  
 MSCP Set Up Parts Change Prompts  
 MSOA Set Up On-Hand Adjustment  
 OMN Order Entry Maintenance Menu  
 OCUS Customer Setup Menu  
 OSOP Set Up Options  
 OSTY Set Up Sale Types  
 OSPC Set Up Price Codes  
 OSSA Set Up Source Accounting  
 OSDL Set Up Display Lines  
 OGPP Gross Profit Pricing Menu  
 OSTI Set Up Pick Tickets  
 OSSP Set Up Sales & Profit Tracking  
 OSLP Set Up Laser/Printing Options  
 OSNR Set Up Non-Returnable Parts  
 OSPL Set Up Print List Escalation  
 OSCA Set Up Cashiering Options  
 OSOC Set Up Optional Charge Account  
 OSPT Set Up Productivity Table  
 OSCO Status Code Setup Menu  
 PAR Parts Average Price Report  
 PBE Price Break Escalation  
 PMU Parts Master Update  
 PUU P-U Update  
 RDL Restore Display Lines  
 SCT Set Cost  
 SPM Special Order Maintenance Menu  
 SOF Special Order Forms Builder  
 SOS Special Order Setup Options  
 UOP Update Special Order Priority  
 CNS Customer Notification Setups  
 SUL Set Up Locate  
 TMT Tax Maintenance Menu  
 UTO Update Tax Options  
 UTA Update Tax Agency  
 UTG Update Tax Grouping Definition  
 UXC Update Tax Code  
 UED Update Tax Exempt Description  
 UPQ Update Permanent Quotes  
 UXR Update Cross Reference

## MO Miscellaneous OE Routines

COV Credit Override  
 CPE Correct PID Errors  
 PID Post Invoice Data  
 PRD Productivity  
 RIS Restore Invoice Summary  
 RPR Restore Productivity  
 SPF Set Up Post Files  
 SRF Set Up Report Files  
 SUP Set Up Printers  
 USP Update Sales and Profit  
 VAI Validate Accounting Information  
 VAS Validate Accounting Setup  
 IWDT Parts Disposal  
 IWRT Warranty Returns  
 IWPT Receive Warranty Parts

## UF Utility Functions

ESP English Statement Processor  
 RPG Report Generator  
 CRPG Enhanced Report Generator  
 SGR Stack Generated Reports  
 DED Display ESP Data Base  
 ENG Enter ENGLISH Statement  
 PCR Print Custom Reports  
 SCR Set Up Customer Reports  
 TRM Set Terminal Characteristics  
 PMG Printer Management Menu  
 SPC Spooler Printer Setup  
 SRE Printer Setup Report  
 SJM Spooler Job Management  
 SQM Spooler Queue Management  
 SPL Spooler Menu  
 SPA Assign Output to Spooler  
 SLC Set Up Lineprinter Characteristics  
 SPE Edit Print Jobs  
 DSA Display Spooler Assignment  
 SPS Display Spooler Status  
 SPJ List Spooled Jobs  
 SPT Stop Printing  
 TPH Terminal Independent Processor  
 JOB Job Stack  
 DCS Run DCS Routines  
 COP Communications Operations Menu  
 BAP Batch Printing  
 TPC Connect to Server Process  
 REM Remote Logon  
 CMU Customer Mail Utilities  
 TMPL Set Up Mail Templates  
 MAIL Set Up Mailings  
 DCV Document Character Viewer  
 LLS List Lock Status  
 SPTO Turn On Customized Output  
 REF Reflection Menu  
 RXR Enter ENG Statement & Download  
 RPX Select RPG Report & Download  
 XRAM Download & Install XR Patch  
 AGRV View Names and Vehicles  
 ETC Electronic Timeclock  
 PLS ADP-plus Menu  
 TGM Service Pricing Price Mgt.  
 CIS Connect to CIS Server  
 WST WebSuite Only